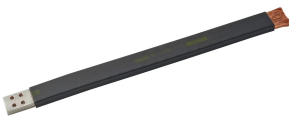


FleXbus Conductor, 640 mm², 8,000 mm x 25 mm x 25 mm x 23.6 kg

Data Solutions

KATALOGNUMMER

FLEXCOND640L8



nVent ERIFLEX FleXbus Conductor is ready-to-use from one side with direct connection to busbar or circuit-breaker palm. It is an innovative and patented connection solution between two pieces of electrical equipment (such as a transformer, switchboard or generator). FleXbus Advanced maintains a high level of reliability and creates an easy and customizable connection on-site without additional design study, specific specialized workforce or expensive tools. The FleXbus Conductor is insulated with a low-smoke, halogen-free, flame-retardant (LSHFRR), high-temperature and class II material. FleXbus Conductor is a flexible, copper-plated, aluminum flat braid with insulation available from 2 to 25 meters length and under different cross section for 500A to 6300A applications. It allows for connection from the power supply to switchgear with only one conductor per phase up to 1600kVA and with two conductors per phase up to 3150kVA.

CERTIFIERINGAR



DESIGN

Flexible insulated copper-plated, aluminum flat braid

Better current/ampacity than cable due to skin effect

Much more flexible than cable

No bending radius to respect

Ready-to-use from one side with direct connection on busbar or circuit breaker palm

Only one conductor per phase from 400kVA (560 A) to 1600kVA (2250 A) and two conductors per phase for 2000kVA (2800 A) to 3150kVA (4435 A)

PRODUKTATTRIBUT

Artikelnummer: 508036

Tvärsnitt: 640mm²

Längd 1 (L1): 8000mm

Längd 2 (L2): 75mm

Ledarmaterial: Kopparpläterat aluminium

Kontaktfinish: Förtentat

Kontaktmaterial: Koppar

Isoleringsförlängning: 500% min

Isolationstjocklek: 2.5 – 3.5mm

Dielektrisk styrka: 20kV/mm

Brandklassning: UL® 94V-0

Halogenfri klassning: UL® 2885; IEC® 60754-1; IEC® 62821-2

Lågt rökvärde: IEC® 61034-2; ISO 5659-2; UL® 2885

Mekanisk resistensklassificering: IK09

UV-resistensgrad: UL® 2556; UL® 854

Kabeldiameter: 0.2mm

Nominell spänning, IEC: 1000V; 1500V

Max. arbetsspänning, EN 50264-3-1: 6000V

Arbetstemperatur: -50 to 115°C

Uppfyller: IEC® 60695-2-11 (glödtrådstest 960 °C); IEC® 61439.1; IEC® 61439.1, klass II; IEC® 60364

ΔT 60 K: 1233A

Bredd 1 (W1): 58mm

Bredd 2 (W2): 50mm

Höjd 1 (H1): 31.15mm

Höjd 2 (H2): 21.3mm

Hålstorlek (HS): 11mm

Enhetsvikt: 23.6kg

A.: 25mm

B.: 25mm

C.: 25mm

D.: 12.5mm

2 bar strömkoeficient, icke-symmetrisk: 1.51

2 bar strömkoeficient, symmetrisk: 2

Installationsstandard: AS 3008; BS 7671; CEI 64-8; CSN; DIN VDE 0100; HD 384; IEC® 60364; NBR 5410; NEN 1010; NFC 15-100; NIBT-NIN; NP (2002); ÖNORM; REBT; RGIE-AREI

YTTERLIGARE PRODUKTINFORMATION

Optional extender available for more connection possibilities.

Current Coefficient According to Temperature Rise								
Temperature Rise	ΔT 30°C	ΔT 40°C	ΔT 45°C	ΔT 50°C	ΔT 55°C	ΔT 60°C	ΔT 65°C	ΔT 70°C
Derating Coefficient	0.71	0.82	0.87	0.91	0.96	1.00	1.04	1.08

DIAGRAMS



VARNING

nVent produkter ska installeras och användas endast så som anges i nVents bruksanvisning och utbildningsmaterial. Bruksanvisningar är tillgängliga på www.nvent.com och från din nVent kundtjänstrepresentant. Felaktig installation, missbruk, felapplicering eller annan brist i att helt följa nVents instruktioner och varningar kan orsaka att produkten brister, egendomsskador, allvarliga kroppsskador och dödsfall och/eller ogiltigförklara din garanti.



Vårt starka utbud av varumärken:

CADDY ERICO HOFFMAN ILSCO SCHROFF TRACHTE