

IBSB Advanced Insulated Braided Conductor, 160 A, 25 mm², 330 mm

Data Solutions

NUMER KATALOGOWY

IBSBADV25-330

IBS/IBSB Advanced Insulated Braided Conductor, Halogen Free is the ideal ready-to-install flexible wire replacement solution that is specifically designed for connections to all molded case circuit breakers, including the most compact breakers on the market. IBS/IBSB Advanced connects to the front access terminals of the breakers without any additional accessories, such as angular connectors, spreaders, ring terminal connectors or extenders. IBS/IBSB Advanced is available in cross sections of 25 to 240 mm² (49.34 to 273.65 kcmil), lengths from 230 to 1,030 mm (9.06" to 40.55"), and 80 to 700 A.

Manufactured in an ISO 9001 2015 certified automated facility, IBS/IBSB Advanced is formed by weaving high-quality electrolytic copper wire to form a durable low voltage connector with maximum flexibility which allows for more compact power connections to circuit breakers. The IBS/IBSB Advanced allows users to reduce the total size and weight of the installation, improving both design flexibility and assembly aesthetics.

The unique manufacturing process of integral pre-punched palms make IBS/IBSB Advanced ready to connect out of the box. There are no lugs to purchase or install, making connections simpler and faster and eliminates faulty connections due to vibration or fatigue.

IBS/IBSB Advanced is compatible with all major brand molded case circuit breakers.

The advanced technology insulation is a high-resistance low smoke, halogen-free and flame retardant thermoplastic.

IBS/IBSB Advanced does not generate corrosive gases and produces a relatively low smoke opacity in accordance with IEC 61034-2 and UL 2885. The low smoke characteristic improves visibility conditions for people to be able to easily locate the emergency exit and also allows rescue workers to better assess an emergency situation. IBS/IBSB



Advanced means greater safety for individuals, less damage for your electrical equipment and less environmental impact.

The halogen-free feature enables a reduction in the quantity of toxic smoke. IBS/IBSB Advanced does not contain any halogens, according to IEC 60754-1 and UL 2885, minimizing toxicity and making it the ideal product for use in enclosed spaces such as data centers, rail, and public facilities such as hospitals and schools. This also facilitates the use of IBS/IBSB Advanced in specific applications such as submarines, switchboards and other enclosed environments that require a low emissions solution.

In addition to the above features, IBS/IBSB Advanced is compliant with the UL 94-V0 testing standard and glow wire test 960 °C. The flame retardant portion of the test illustrates the self-extinguish feature. This superior feature of IBS/IBSB Advanced is also shown by the Limiting Oxygen Index (LOI) at 30%. In case of fire, IBS/IBSB Advanced generates a limited quantity of smoke that is less damaging to your electrical equipment.

CERTYFIKATY



FUNKCJE

Łatwy i prosty montaż

Zgodność z normą RoHS

Suitable for all main molded case circuit breakers

Resistant to vibration, improving reliability and performance

Insulated by high-resistance, halogen free, flame retardant and low smoke material

Tinned copper provides superior corrosion resistance

Improves assembly flexibility and aesthetics

No additional cutting, stripping, crimping and punching needed

Integral palm without lugs or terminals reduces material and assembly weight

Conforms to NF EN 45545 obtaining an HL3 classification for chapters R22 and R23

DNV GL® and Bureau Veritas certified for marine and offshore applications

Small wire diameter provides maximum flexibility

Dramatically smaller and more flexible than comparable cable based on ampacity

Better power density than cable with lower skin effect ratio

Reduces total installation cost

Tinned copper allows for copper or aluminum conductor connections

On request, can be manufactured with other colors (typically with Orange sleeve for battery connection)

ATRYBUTY PRODUKTU

Numer artykułu: 534401

Prąd znamionowy typowego zastosowania: 160A

Szczytowy prąd zwarcia (I_{pk}): 14kA

Wykończenie: Cynowany

Materiał: Miedź; Elastomer termoplastyczny

Wytrzymałość dielektryczna: 20

Klasyfikacja palności: UL® 94V-0

Bez zawartości halogenów: UL® 2885; IEC® 60754-1; IEC® 62821-1

Niska wartość emisji dymu: IEC® 61034-2; ISO 5659-2; UL® 2885

Odporność na promieniowanie UV: UL® 2556; UL® 854

Wydłużenie izolacji: 500%

Grubość izolacji: 1.8mm

Maks. napięcie robocze, UL 67: 600

Temperatura robocza: -50 to 115°C

Maks. napięcie robocze, IEC/UL 758: 1000; 1500

Maks. napięcie robocze, EN 50264-3-1: 6000V

Średnica drutu: 0.15mm

Szczegóły dotyczące certyfikacji: UL® 67; UL® 758

Zgodność z: IEC® 60439.1; IEC® 60695-2-11 (próba rozżarzonego drutu 960°C); IEC® 61439.1; IEC® 61439.1 klasa II

Przekrój: 25mm²

Szerokość przewodu: 12mm

Grubość przewodu: 2.8mm

Długość (L): 330mm

A.: 6.5mm

B.: 6.5mm

C.: 18mm

D.: 9mm

Rozmiar otworu 1 (HS1): 6.5mm

Rozmiar otworu 2 (HS2): 6.5mm

Masa urządzenia: 0.11kg

DODATKOWE INFORMACJE O PRODUKCIE

ΔT = Temperature of conductors – Internal temperature of panel.

This table indicates the temperature rise produced by chosen current in the given section. This calculation does not take into account the heat dissipation from the switch gear.

IBSB Advanced Insulated Braided Conductor with a cross section of 240 mm² (473.65 kcmil) is constructed of red copper strands with tinned palms.

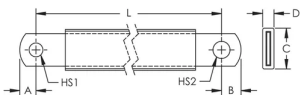
Distance between supports must not exceed 630 mm (17.8") according to IEC 61439-1.

Maximum Ampacity Ratings									
Cross Section (mm ² /kcmil)	ΔT 30° C (A)	ΔT 40° C (A)	ΔT 45° C (A)	ΔT 50° C (A)	ΔT 55° C (A)	ΔT 60° C (A)	ΔT 70° C (A)	2 Bar Current Coefficient	3 Bar Current Coefficient
25/49.34	116	134	142	150	157	164	177	1.6	2
50/98.68	213	246	260	274	288	301	325	1.6	2
70/138.15	226	261	277	291	306	319	345	1.6	2
100/197.35	298	344	365	385	404	422	456	1.6	2
120/236.82	363	419	444	468	491	513	554	1.6	2
185/365.1	416	480	509	537	563	588	635	1.6	2
240/473.65	556	642	681	718	753	786	849	1.6	2

Maximum Ampacity Ratings									
Cross Section (mm ² /kcmil)	ΔT 30° C (A)	ΔT 40° C (A)	ΔT 45° C (A)	ΔT 50° C (A)	ΔT 55° C (A)	ΔT 60° C (A)	ΔT 70° C (A)	2 Bar Current Coefficient	3 Bar Current Coefficient
25/49.34 (IBSB)	116	134	142	150	157	164	177	1.6	2
25/49.34 (IBS)	137	158	167	177	185	193	209	1.6	2
50/98.68	213	246	260	274	288	301	325	1.6	2
70/138.15	226	261	277	291	306	319	345	1.6	2
100/197.35	298	344	365	385	404	422	456	1.6	2
120/236.82	363	419	444	468	491	513	554	1.6	2
185/365.1	416	480	509	537	563	588	635	1.6	2
240/473.65	556	642	681	718	753	786	849	1.6	2

Circuit Breaker Compatibility									
Circuit Breaker Current Rating	125/160 A		250 A		300 A	350 A	400 A	500 A	630 A
Part Number	IBSBADV25x	IBSADV25x	IBSBADV50x	IBSADV50x	IBSBADV70x	IBSBADV100x	IBSBADV120x	IBSBADV185x	IBSBADV240x
Schneider Electric® Compact® (IEC)	NSA NG 125	NSX 100 NSX 160	NSX 250	NSX 250	NSX 400	NSX 400	NSX 400	NSX 630	NSX 630
Square D® PowerPact® (UL)	H-Frame	J-Frame	J-Frame	J-Frame	L-Frame	L-Frame	L-Frame	-	-
ABB® Tmax® (IEC)	T1 T2 XT1 XT2	-	T3 XT3 XT4	T3 XT3 XT4	T4	T4	T5	T5	T5
ABB® Tmax® (UL)	T1 T2 XT1 XT2	T3	T4 XT3 XT4	T4	T5	T5	T5	-	-
GE® Record Plus® (IEC/UL)	FD 160	FD 160	FE 250	FE 250	FG 400	FG 400	FG 400	FG 630	FG 630
Siemens® Sentron® (IEC/UL)	VL160X 3VL1 VL160 3VL2	-	VL250 3VL3	VL250 3VL3	VL400 3VL4	VL400 3VL4	VL400 3VL4	-	-
Moeller® xEnergy® (IEC)	NZM1	-	NZM2	NZM2	NZM3	NZM3	NZM3	NZM3	NZM3
Cutler Hammer® Series G (UL)	EG Frame	JG Frame	JG Frame	JG Frame	LG Frame	LG Frame	LG Frame	LG Frame	LG Frame
Legrand® (IEC)	DPX 160 DPX3 160	-	DPX 250 DPX3 250	DPX 250 DPX3 250	DPX 630	DPX 630	DPX 630	DPX 630	DPX 630
Hager® (IEC)	h3 160	-	h3 250	h3 250	h3 630	h3 630	-	-	-
Rockwell/Allen Bradley (UL)	G-Frame H- Frame	-	I-Frame J- Frame	I-Frame J- Frame	I-Frame J- Frame	-	K-Frame	K-Frame	-
Mitsubishi Electric (IEC)	-	NF125 NF160 DSN125 DSN160	NF250 DSN250	NF250 DSN250	-	NF400 DSN400	-	-	-
OEZ (IEC)	BC160N	-	BD250N BD250S	-	BH630B BH630S	BH630B BH630S	BH630B BH630S	BH630B BH630S	BH630B BH630S

SCHEMATY



OSTRZEŻENIE

Produkty nVent powinny być instalowane i używane wyłącznie zgodnie z instrukcjami i materiałami szkoleniowymi nVent. Instrukcje są dostępne na stronie www.nvent.com oraz u przedstawiciela działu obsługi klienta firmy nVent. Nieprawidłowa instalacja, niewłaściwe użycie, niewłaściwe zastosowanie lub inne nieprzestrzeganie instrukcji i ostrzeżeń nVent może spowodować nieprawidłowe działanie produktu, uszkodzenie mienia, poważne obrażenia ciała i śmierć i/lub utratę gwarancji.



Marki w naszej ofercie:

CADDY ERICO HOFFMAN ILSCO SCHROFF TRACHTE

©2026 nVent. Wszystkie znaki i logo nVent są własnością firmy nVent Services GmbH albo jej spółek zależnych lub są licencjonowane. Wszystkie pozostałe znaki towarowe są własnością odpowiednich właścicieli. Firma nVent zastrzega sobie prawo do zmiany specyfikacji bez powiadomienia.

Ten dokument jest generowany przez system.