

Deck Bases and Foundations

For Self-Framing Modular Building Solutions

nVent TRACHTE manufactures an extensive array of structural bases for modular buildings, industrial duty shelters and skid mounted units. Structural bases have numerous lifting, cinching or tie-down provisions to ensure they're fully secured during transportation and can be easily offloaded at the final site.



Decked Base

- Decked Bases are specified for about 70% of modular buildings
- Feature a ladder style frame with a solid plate deck
- Sizes range from 4 square feet to 30 feet wide and 80 feet long
- Perimeter beams can exceed 24" H Beam
- Bases can support weights exceeding 500,000 pounds



Open Base (No Floor Buildings)

- Perimeter frame with seal-welded gussets in each corner
- For placement on a concrete pad or footings
- Optional recessed doorway thresholds or removable configurations to comply with ADA requirements.
- Applications include utility, storage, metering, or analytics

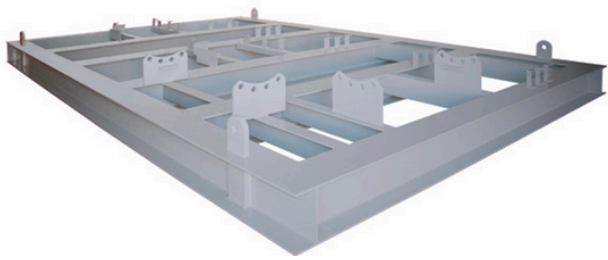


Drag-Skid Base

- Designed for gas and oil equipment
- Feature wide flange H-Beams modified with "upturned" ends and drag-skid bars formed from schedule 80 pipe and oversized end caps.
- Feature a beam running the full length of the base and recessed cross members to increase rigidity, provide the greatest area of ground surface contact and minimize underside mud accumulation during loading and unloading.

Deck Bases and Foundations

Self-Framing Modular Building Solutions



Equipment Base

- Used as process unit skids to support piping, vessels, and other processing equipment
- I-Beams are rated based on the process equipment
- Support surface mount and recessed grating, decking, and modular buildings, large control panels, compressors, or generators



Extended Base

- Extend beyond the perimeter of a modular building
- Support ancillary equipment
- Recessed grating, equipment mounting pads, and safety rails



Sump Base

- Provide chemical spill containment basis within the structural cavity
- Basis are flat or sloped and fitted with drain connections
- Use with a decked base under metering pipe, chemical pumps, or other equipment with leak potential.