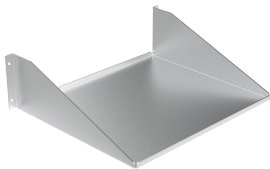


Single-Sided Vented Shelf, fits 19-inch rack, Black, Steel

Data Solutions

CATALOG NUMBER

ESH19V



The Single-Sided Steel Vented Shelf mounts to either front or rear flange of open-frame rack, supporting equipment that does not get mounted into rack angles. It uses 3U of rack space and is load rated for 150 lb. (68.0 kg).

FEATURES

The Single-Sided Steel Vented Shelf mounts to either front or rear flange of open-frame rack, supporting equipment that does not get mounted into rack angles

It uses 3U of rack space and is load rated for 150 lb. (68.0 kg)

PRODUCT ATTRIBUTES

Article Number: 35229

Material: Mild Steel

Finish: Powder Coated

Color: Jet Black

Color Code: RAL 9005

Thickness: 16ga

Rack Units: 3U

Height: 4.85in

Width: 19in

Depth: 10.5in

Weight: 5lb

WARNING

nVent products shall be installed and used only as indicated in nVent's product instruction sheets and training materials. Instruction sheets are available at www.nvent.com and from your nVent customer service representative. Improper installation, misuse, misapplication or other failure to completely follow nVent's instructions and warnings may cause product malfunction, property damage, serious bodily injury and death and/or void your warranty.



Our powerful portfolio of brands:

CADDY ERICO HOFFMAN ILSCO SCHROFF TRACHTE