

Flexbus Conductor, 1.984 in², 275.59" x 1.97" x 1.97" x 0.98" x 87.52 lb

Data Solutions

CATALOG NUMBER

FLEXCOND1280L7



nVent ERIFLEX Flexbus Conductor is ready-to-use from one side with direct connection to busbar or circuit-breaker palm. It is an innovative and patented connection solution between two pieces of electrical equipment (such as a transformer, switchboard or generator). Flexbus Advanced maintains a high level of reliability and creates an easy and customizable connection on-site without additional design study, specific specialized workforce or expensive tools. The Flexbus Conductor is insulated with a low-smoke, halogen-free, flame-retardant (LSHFRR), high-temperature and class II material. Flexbus Conductor is a flexible, copper-plated, aluminum flat braid with insulation available from 2 to 25 meters length and under different cross section for 500A to 6300A applications. It allows for connection from the power supply to switchgear with only one conductor per phase up to 1600kVA and with two conductors per phase up to 3150kVA.

CERTIFICATIONS



FEATURES

Flexible insulated copper-plated, aluminum flat braid

Better current/ampacity than cable due to skin effect

Much more flexible than cable

No bending radius to respect

Ready-to-use from one side with direct connection on busbar or circuit breaker palm

Only one conductor per phase from 400kVA (560 A) to 1600kVA (2250 A) and two conductors per phase for 2000kVA (2800 A) to 3150kVA (4435 A)

PRODUCT ATTRIBUTES

Article Number: 508055

Cross Section: 1.98in²

Length 1 (L1): 275.59in

Length 2 (L2): 3.94in

Conductor Material: Copper Clad Aluminum

Connector Finish: Tinned

Connector Material: Copper

Insulation Elongation: 500% min

Insulation Thickness: 0.1 – 0.14in

Dielectric Strength: 20kV/mm

Flammability Rating: UL® 94V-0

Halogen Free Rating: UL® 2885; IEC® 60754-1; IEC® 62821-2

Low Smoke Rating: IEC® 61034-2; ISO 5659-2; UL® 2885

Mechanical Resistance Rating: IK09

UV Resistance Rating: UL® 2556; UL® 854

Wire Diameter: 0.01in

Nominal Voltage, IEC: 1000V; 1500V

Max Working Voltage, EN 50264-3-1: 6000V

Working Temperature: -58 to 239°F

Complies With: IEC® 60695-2-11 (Glow Wire Test 960 °C); IEC® 61439.1; IEC® 61439.1 Class II; IEC® 60364

ΔT 60 K: 1984A

Width 1 (W1): 4.25in

Width 2 (W2): 3.94in

Height 1 (H1): 1.23in

Height 2 (H2): 0.71in

Hole Size (HS): 0.55in

A: 1.97in

Unit Weight: 87.52lb

B: 1.97in

C: 0.98in

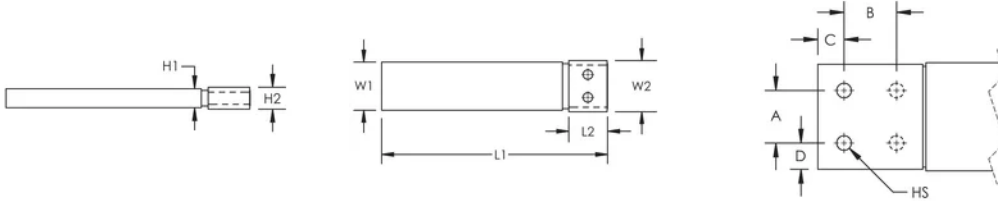
D: 0.98in

Installation Standard: AS 3008; BS 7671; CEI 64-8; CSN; DIN VDE 0100; HD 384; IEC® 60364; NBR 5410; NEN 1010; NFC 15-100; NIBT-NIN; NP (2002); ÔNORM; REBT; RGIE-AREI

ADDITIONAL PRODUCT DETAILS

Optional extender available for more connection possibilities.

DIAGRAMS



WARNING

nVent products shall be installed and used only as indicated in nVent's product instruction sheets and training materials. Instruction sheets are available at www.nvent.com and from your nVent customer service representative. Improper installation, misuse, misapplication or other failure to completely follow nVent's instructions and warnings may cause product malfunction, property damage, serious bodily injury and death and/or void your warranty.



Our powerful portfolio of brands:

CADDY ERICO HOFFMAN ILSCO SCHROFF TRACHTE