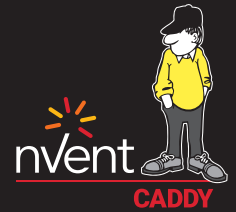


Wired to Win

nVent CADDY Prefab Solutions Help Mona Electric Move Fast Without Missing a Step



CASE STUDY



Our Customer:

ArchKey Solutions/
Mona Electric

The Challenge:

Augment existing
prefabrication capabilities

Our Solution:

nVent CADDY Full Prefab
Solutions (CPS)

The Result:

Streamlined workflows and
simplified installations

“nVent CADDY Full Prefab Solutions provides ready-made answers at the project’s design phase. Ever since nVent CADDY developed their innovative Open Back Box, we’ve functioned more as partners in solving problems.

—Mona team

Building a Reputation

ArchKey Solutions/Mona Electric (Mona) has been tackling the most challenging projects along the East Coast since 1966. As a premier Mid-Atlantic electrical contractor, this team skillfully manages low-voltage “portfolio-type” construction including many large health care, educational, government, commercial use, and warehouse facilities.

Mona occupies a headquarters building in Clinton, Maryland, as well as a prefabrication shop for the efficient production of electrical components. In 2019, the company found itself engaged in multiple projects including a multiuse office, hospitality and retail building in Tysons, Virginia, totaling 2.7 million square feet of space. Mona’s work on the 26-acre development spans years and includes full electrical and distribution capabilities.

Faced at the time with a fast-growing roster of other complex projects—and feeling the strain of a growing labor shortage due to the global pandemic—the Mona team searched for ways to improve timelines in repeatable installations. The goal was to identify third-party providers of prefabrication solutions that could seamlessly integrate with operations to optimize workflow efficiency.

Finding Prefab Assistance

Mona was aware that by capitalizing on offsite prefabrication possibilities, ensuring timely delivery of components, and collaborating with solutions providers to enhance operations within a controlled setting, the potential for a safer and more economically efficient project delivery could be realized.

“nVent CADDY CPS has become a typical installation feature on most of our projects.”

After assessing various vendors, Mona selected **nVent CADDY** to provide full prefabrication support. The Mona team likes that its projects are assigned to field-experienced electricians who speak the company’s language, so things run smoothly throughout the design process. When needed, the same electricians step up to build fully configured assemblies on demand to meet Mona’s specifications with exceptional consistency.

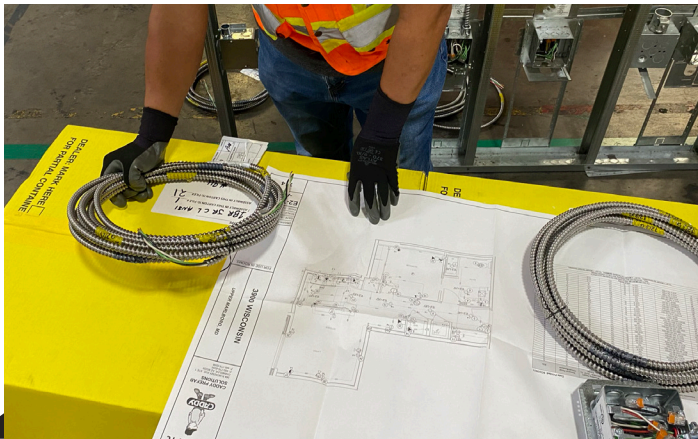
This helps installers move from floor to floor with greater ease and no confusion about “what’s in the box?”—a problem electricians know all too well.

For Electricians, By Electricians

Mona found **nVent CADDY Full Prefab Solutions (CPS)** an ideal match for its expanding enterprise. Since 2007, nVent CADDY CPS has delivered prefabricated branch wiring systems directly to job sites on the contractor's schedule.

The cornerstone of this solution is the **nVent CADDY Open Back Box**, a patented product allowing the assembly to be delivered with devices installed so field crews can avoid disassembling before final connection.

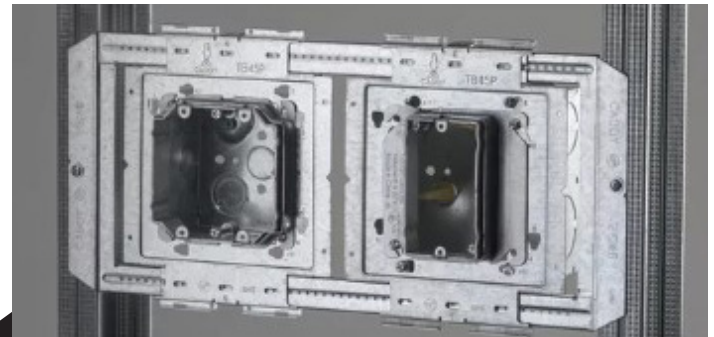
The Mona team appreciates how assemblies arrive palletized and in cartons clearly marked with the unit number or area type, making job site distribution much faster. Each assembly is assigned a number noted on the attached assembly list and unit drawing for quick reference. In addition, wall labels are included as well as all accessory items needed to complete the installation.



nVent CADDY CPS scales with projects by providing advanced prefabrication assemblies that are UL-listed, designed to strict specifications, and assembled in a controlled environment.

Impact on Installations

Mona is confident the standardization of its off-site manufacturing processes has been simplified thanks to nVent CADDY Prefab Solutions and resulting success on multiple projects. As one team member explains, installation time studies are now inclusive of in-wall rough-ins based on an itemized assessment of total scope opposed to material takeoffs:



Ready to use right out of the box, nVent CADDY's **Heavy-Duty Prefab Assemblies** eliminates the need for far-side support and saves Mona's installers valuable time on the job.

"We know exactly how many components an installer needs to pull out of an nVent CADDY box on any given day to turn a profit. As an evolution of our offsite manufacturing, its simplicity and breadth combined, and as a byproduct, project teams that are unfamiliar with it or that witness the success of the program are now asking for it as well."



nVent CADDY boxes are like 'easy buttons' for our spec requirements.



More to Come

After 57 years of expertly executing complex construction projects, Mona knows how to create value for its clients by choosing customized services that fit unique needs. This includes the prefabrication and site-ready packaging of junction box assemblies—a comprehensive solution from nVent CADDY CPS that supports the electrical contractor's most stringent requirements and helps keep its crews on schedule.



We are in the range of using 80% nVent CADDY Prefab Assemblies for certain projects, and we're very pleased with the quality, delivery, support—all of it—from design to installation to what's next for us. It's the most complete package out there.



Explore **Full Prefab Solutions**, shop **Standard Prefab Assemblies**, or **Get a Quote from nVent CADDY**.

[nVent.com/CADDY](https://www.nvent.com/CADDY)

