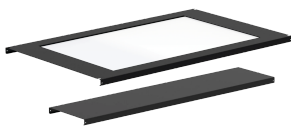


# ProLine Containment System Window Ceiling Panel

## Data Solutions



Window Ceiling Panels have easily modified, .22-inch (6 mm) polycarbonate panels to accommodate local fire-suppression codes. Overhead window panel made of .22-in. polycarbonate.

### FEATURES

Frame made of 16 gauge steel

Overhead window panel made of .22-inch polycarbonate

Sealed containment, Window Ceiling Panels have easily modified .22-in. polycarbonate panels to accommodate local firesuppression codes (sprinkler heads)

Tool-less Ceiling Panels are easy to install and remove for cleaning and provide above-the-cabinet access to cables, equipment and systems

Clear, transparent door and roof panels provide maximum light to aisleway

### SPECIFICATIONS

Table 1/2

| Catalog Number | Article Number | Height | Width  | Depth | Material   | Finish        |
|----------------|----------------|--------|--------|-------|------------|---------------|
| PCP312         | 38766          | 143mm  | 1309mm | 297mm | Mild Steel | Powder Coated |

Table 2/2

| Catalog Number | Article Number | Color     | Color Code | Thickness | Aisle Width |
|----------------|----------------|-----------|------------|-----------|-------------|
| PCP312         | 38766          | Jet Black | RAL 9005   | 1.52mm    | 1219mm      |

## WARNING

---

nVent products shall be installed and used only as indicated in nVent's product instruction sheets and training materials. Instruction sheets are available at [www.nvent.com](http://www.nvent.com) and from your nVent customer service representative. Improper installation, misuse, misapplication or other failure to completely follow nVent's instructions and warnings may cause product malfunction, property damage, serious bodily injury and death and/or void your warranty.



Our powerful portfolio of brands:

**CADDY ERICO HOFFMAN ILSCO SCHROFF TRACHTE**