

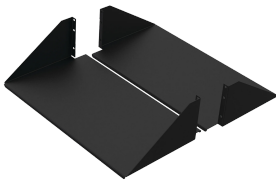
# Double-Sided Solid-Steel Shelf, fits 23-in LAN R, Black, Steel

## Data Solutions

### CATALOG NUMBER

---

**ESHD23**



The Double-Sided Solid Steel Shelf mounts to both the front and rear flanges of an open-frame rack. It consists of two shelves mounted on each side of the open-frame rack to form a double-sided shelf. It is a heavier duty solution as compared to the aluminum version. The load rating is 300 lb. (136.1 kg) total.

### FEATURES

---

The Double-Sided Solid Steel Shelf mounts to both the front and rear flanges of an open-frame rack

It consists of two shelves mounted on each side of the open-frame rack to form a double-sided shelf

It is a heavier duty solution as compared to the aluminum version

The load rating is 300 lb. (136.1 kg) total

### PRODUCT ATTRIBUTES

---

Article Number: 21879

Material: Mild Steel

Finish: Powder Coated

Color: Jet Black

Color Code: RAL 9005

Thickness: 1.52mm

Rack Units: 3U

Height: 123mm

Width: 584mm

Depth: 267mm

Rack Width: 23in

## WARNING

---

nVent products shall be installed and used only as indicated in nVent's product instruction sheets and training materials. Instruction sheets are available at [www.nvent.com](http://www.nvent.com) and from your nVent customer service representative. Improper installation, misuse, misapplication or other failure to completely follow nVent's instructions and warnings may cause product malfunction, property damage, serious bodily injury and death and/or void your warranty.



Our powerful portfolio of brands:

**CADDY   ERICO   HOFFMAN   ILSCO   SCHROFF   TRACHTE**