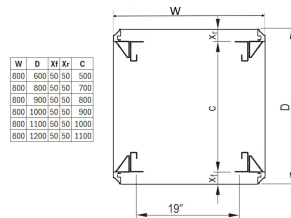


Varistar CP Cabinet Frame, 24 U, 1200H, 800W, 900D

Data Solutions

CATALOG NUMBER

20630-073



Varistar CP welded frame is available for static load requirements and can be integrated with 19", ETSI or mounting plate. Additionally, castors can be added to the frame if needed.

However, if you require castors for your application, you might want to consider a mobile frame that already includes castors.

FEATURES

Welded, finish powder-coated, black gray, RAL 7021

St, 1.5 mm, zinc-plated, with central GND/grounding point

Static load-carrying capacity max. 1600 kg

Please order adjustable feet separately

PRODUCT ATTRIBUTES

Rack Height: 24U

Height: 1200mm

Width: 800mm

Depth: 900mm

Package Quantity: 1

Color: Black Grey

Color Code: RAL 7021

Frame Material: Steel

Material: Steel

Product Family: Varistar CP

Product Type: Cabinet/Rack Frame

Static Load: 1600kg

Type: Standard

Works With: Varistar CP

Net Weight: 32.972kg

ADDITIONAL PRODUCT DETAILS

Castor can be added to the frame. If you will need a castor for your application, you can order a mobile frame which include castors.

WARNING

nVent products shall be installed and used only as indicated in nVent's product instruction sheets and training materials. Instruction sheets are available at www.nvent.com and from your nVent customer service representative. Improper installation, misuse, misapplication or other failure to completely follow nVent's instructions and warnings may cause product malfunction, property damage, serious bodily injury and death and/or void your warranty.



Our powerful portfolio of brands:

CADDY ERICO HOFFMAN ILSCO SCHROFF TRACHTE