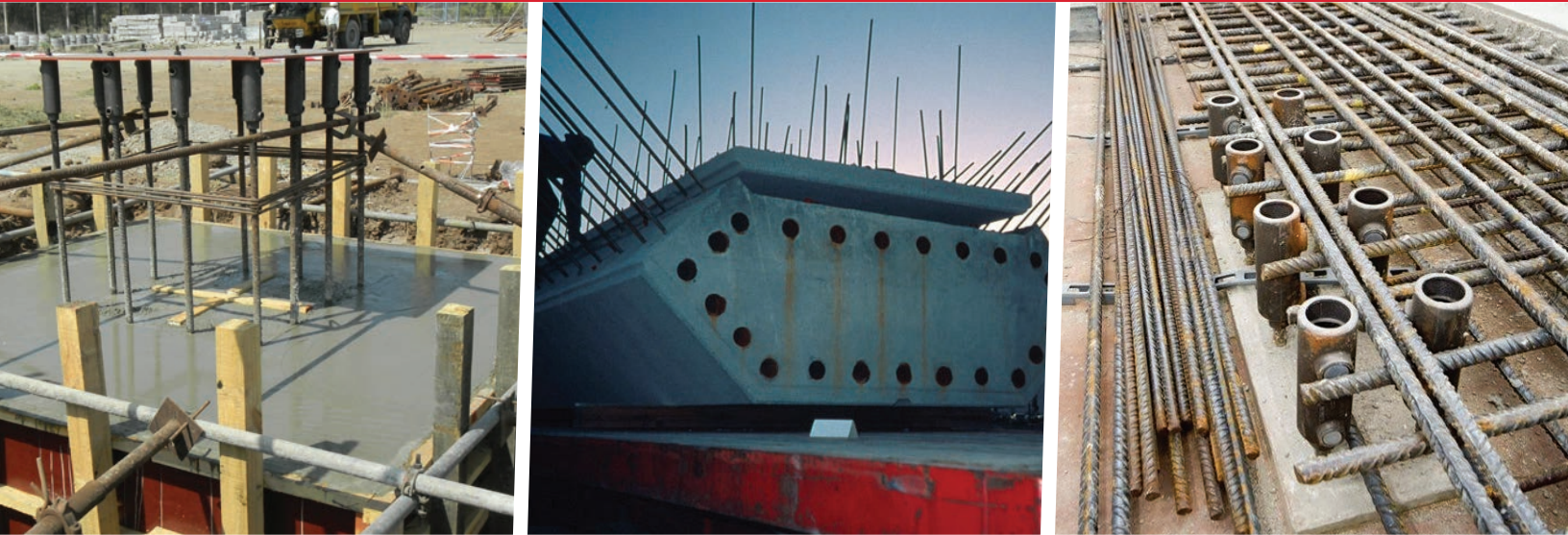


nVent LENTON Interlok HY15LM Grout



The nVent LENTON Interlok HY15LM grout is a proprietary, nonmetallic, high-strength, nonshrink grout developed exclusively for the nVent LENTON Interlok coupling system. The nVent LENTON Interlok HY15LM grout is produced under strict nVent quality guidelines in order to ensure product quality along with consistent and reliable performance.

FEATURES

- Cures quickly, allowing early removal of bracing systems
- Nonmetallic grout will not rust or stain structures
- Designed to provide superior dynamic, seismic and ultimate strength performance for moment frame applications
- For use in pump or gravity fill applications



Part Number	Compressive Strength	Working Temperature	Unit Weight
HY15LM	3500 psi @ 1 d, 16000 psi @ 28 d	32 – 100°F	50 lb

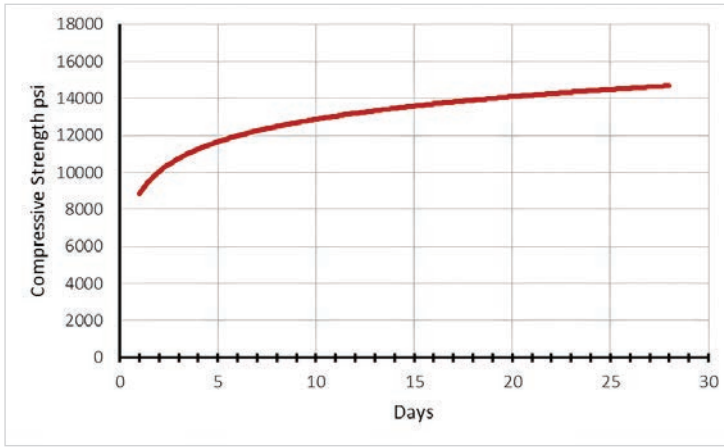


Figure 1: Compressive strength conforming to ASTM C109

CURING

Water Content: 11% – 13% (max 99.8oz or 2.9 L)
 Flow: 7" to 12" diameter nVent LENTON Interlok HY15LM Grout mixed to the placing consistency and tested in accordance with ASTM C191, will have a time of initial setting of about 1-1/2 hours at 68°F (20°C), (working time of 1 hour).

INSTRUCTIONS FOR USE

Follow the nVent LENTON Interlok HY15LM Grout Standard Mixing Instructions on the grout bag, the Instruction Sheet (IP8411), or the Interlok Installation Manual (IP8419).

Always mix full bags – no partial bags.

YIELD QUANTITY

520 in³ = 0.3 ft³ = 2.25 gal = 8.5 L, yield quantity does not account for a scrap factor.

RELEVANT STANDARDS

ASTM C109 Standard Test Method for Compressive Strength of Hydraulic Cement Mortars.

ASTM E488 Standard Test Method for Strength of Anchors in Concrete and Masonry Elements.

ASTM C191 Standard Test Methods for Time of Setting of Hydraulic Cement by Vicat Needle.

STORAGE AND SHELF LIFE

nVent LENTON Interlok HY15LM Grout is packaged in 50 lb (22.7 kg) multiply moisture-resistant bags for optimum performance and shelf life. Interlok HY15LM Grout should be stored in a cool, dry, indoor environment to maintain maximum shelf life and physical properties.

The shelf life of Interlok HY15LM Grout is 12 months from the manufacturing date printed on the bag DDMMYY-V-HH:MM.

EXTREME TEMPERATURE PROPERTIES

After approximately 2 minutes of mixing, add the full contents of the Cold or Hot Temperature Additive packets to the mixing bucket, and re-mix. It may be necessary to scrape down the sides of the bucket to incorporate any dry particles. Mix for an additional minute, bringing total mixing time to approximately 4 minutes. These proprietary grout additives are designed to be used at temperature ranges from 20°F to 50°F (–7°C to 10°C) and 100°F to 120°F (38°C to 49°C), for a standard cure time of 24 hrs to reach a compressive strength of 3500 psi (24 Mpa) in 24 hrs.

When temperature additives are used at temperatures between 50°F and 100°F, the cold temperature additive speeds up grout cure times, allowing rapid gain in early compressive strength achieving 4300 psi (30 Mpa) in 2 hours. In this application, 2 packets of cold temperature additive are used with each bag of HY15LM grout to provide the required cure speed.

PRECAUTIONS

Prior to installation, please read and understand the detailed instructions and safety notices provided in the nVent LENTON Interlok Instruction Manual.



Our powerful portfolio of brands:

CADDY ERICO HOFFMAN ILSCO SCHROFF TRACHTE