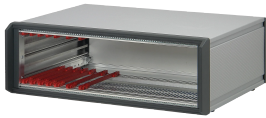


PropacPRO Complete Desktop Case, Shielded



The nVent SCHROFF PropacPRO case provides electronics protection for 19" assemblies such as plug-in units and euroboards. The aluminum die cast frames and profile sidepanels guarantee a robust solution. The case includes EMC shielding as standard.

CERTIFICATIONS



FEATURES

Desktop case, pre-configured in accordance with IEC 60297-3-101 for 19" components

Shielded

Ventilation slots in base plate

Rear panel with vent slots

IP 20 in accordance with IEC 60529

Conforms with DIN EN 62368-1

SPECIFICATIONS

- Static Load:** 25kg
- Product Type:** Case
- Type:** Case for 19" Components
- Product Family:** PropacPRO
- EMC Shielding:** Yes

Table 1/3

| Catalog Number | Rack Height | Rack Width | Depth | Package Quantity | Usable Height | Usable Width |
|----------------|-------------|------------|-------|------------------|---------------|--------------|
|----------------|-------------|------------|-------|------------------|---------------|--------------|

| | | | | | | |
|-----------|----|------|-------|---|---------|-------|
| 24576-122 | 6U | 84HP | 446mm | 1 | 245.7mm | 432mm |
| 24576-105 | 3U | 42HP | 386mm | 1 | 112.3mm | 219mm |
| 24576-102 | 3U | 28HP | 326mm | 1 | 112.3mm | 148mm |
| 24576-110 | 3U | 84HP | 326mm | 1 | 112.3mm | 432mm |
| 24576-111 | 3U | 84HP | 386mm | 1 | 112.3mm | 432mm |
| 24576-121 | 6U | 84HP | 326mm | 1 | 245.7mm | 432mm |
| 24576-104 | 3U | 42HP | 326mm | 1 | 112.3mm | 219mm |
| 24576-106 | 3U | 63HP | 266mm | 1 | 112.3mm | 326mm |
| 24576-109 | 3U | 84HP | 266mm | 1 | 112.3mm | 432mm |
| 24576-112 | 3U | 84HP | 446mm | 1 | 112.3mm | 432mm |
| 24576-113 | 3U | 84HP | 506mm | 1 | 112.3mm | 432mm |
| 24576-103 | 3U | 42HP | 266mm | 1 | 112.3mm | 219mm |
| 24576-107 | 3U | 63HP | 326mm | 1 | 112.3mm | 326mm |
| 24576-101 | 3U | 28HP | 266mm | 1 | 112.3mm | 148mm |
| 24576-108 | 3U | 63HP | 386mm | 1 | 112.3mm | 326mm |

Table 2/3

| Catalog Number | Front Frame Construction | Cooling Option | Complies With | Finish | Height | Material |
|----------------|--------------------------|----------------|-----------------|---------------------------|---------|----------|
| 24576-122 | Single Piece | No | IEC 60297-3-101 | Passivated, Powder Coated | 289mm | Aluminum |
| 24576-105 | Single Piece | No | IEC 60297-3-101 | Passivated, Powder Coated | 155.5mm | Aluminum |
| 24576-102 | Single Piece | No | IEC 60297-3-101 | Passivated, Powder Coated | 155.5mm | Aluminum |
| 24576-110 | Single Piece | No | IEC 60297-3-101 | Passivated, Powder Coated | 155.5mm | Aluminum |
| 24576-111 | Single Piece | No | IEC 60297-3-101 | Passivated, Powder Coated | 155.5mm | Aluminum |
| 24576-121 | Single Piece | No | IEC 60297-3-101 | Passivated, Powder Coated | 289mm | Aluminum |
| 24576-104 | Single Piece | No | IEC 60297-3-101 | Passivated, Powder Coated | 155.5mm | Aluminum |
| 24576-106 | Single Piece | No | IEC 60297-3-101 | Passivated, Powder Coated | 155.5mm | Aluminum |
| 24576-109 | Single Piece | No | IEC 60297-3-101 | Passivated, Powder Coated | 155.5mm | Aluminum |
| 24576-112 | Single Piece | No | IEC 60297-3-101 | Passivated, Powder Coated | 155.5mm | Aluminum |

| Catalog Number | Front Frame Construction | Cooling Option | Complies With | Finish | Height | Material |
|----------------|--------------------------|----------------|-----------------|---------------------------|---------|----------|
| 24576-113 | Single Piece | No | IEC 60297-3-101 | Passivated, Powder Coated | 155.5mm | Aluminum |
| 24576-103 | Single Piece | No | IEC 60297-3-101 | Passivated, Powder Coated | 155.5mm | Aluminum |
| 24576-107 | Single Piece | No | IEC 60297-3-101 | Passivated, Powder Coated | 155.5mm | Aluminum |
| 24576-101 | Single Piece | No | IEC 60297-3-101 | Passivated, Powder Coated | 155.5mm | Aluminum |
| 24576-108 | Single Piece | No | IEC 60297-3-101 | Passivated, Powder Coated | 155.5mm | Aluminum |

Table 3/3

| Catalog Number | Protection Rating | Width |
|----------------|-------------------|---------|
| 24576-122 | IP20 | 470.3mm |
| 24576-105 | IP20 | 257mm |
| 24576-102 | IP20 | 185.9mm |
| 24576-110 | IP20 | 470.3mm |
| 24576-111 | IP20 | 470.3mm |
| 24576-121 | IP20 | 470.3mm |
| 24576-104 | IP20 | 257mm |
| 24576-106 | IP20 | 363.7mm |
| 24576-109 | IP20 | 470.3mm |
| 24576-112 | IP20 | 470.3mm |
| 24576-113 | IP20 | 470.3mm |
| 24576-103 | IP20 | 257mm |
| 24576-107 | IP20 | 363.7mm |
| 24576-101 | IP20 | 185.9mm |
| 24576-108 | IP20 | 363.7mm |

WARNING

nVent products shall be installed and used only as indicated in nVent's product instruction sheets and training materials. Instruction sheets are available at www.nvent.com and from your nVent customer service representative. Improper installation, misuse, misapplication or other failure to completely follow nVent's instructions and warnings may cause product malfunction, property damage, serious bodily injury and death and/or void your warranty.

North America

All locations

+1.763.422.2661

Chat with us:

nvent.com/schroff

Europe

Straubenhardt, Germany

+49.7082.794.0

Betschdorf, France

+33.3.88.90.64.90

Warsaw, Poland

+48.22.209.98.35

Assago, Italy

+39.02.932.7141

Chat with us:

nvent.com/schroff

Asia

Shanghai, China

+86.21.2412.6943

Qingdao, China

+86.532.8771.6101

Singapore

+65.6768.5800

Shin-Yokohama, Japan

+81.45.476.0271

Chat with us:

nvent.com/schroff

Middle East & India

Dubai, United Arab

Emirates

+971.4.378.1700

Bangalore, India

+91.80.6715.2001

Istanbul, Turkey

+90.216.250.7374

Chat with us:

nvent.com/schroff



Our powerful portfolio of brands:

CADDY

ERICO

HOFFMAN

ILSCO

SCHROFF

TRACHTE