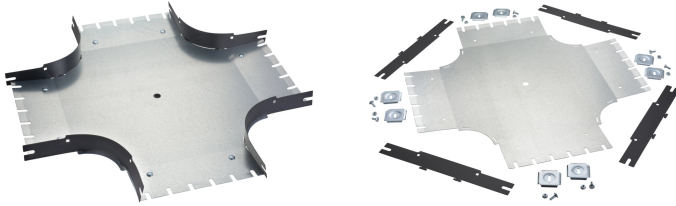


Wire Basket Tray PreForm Intersection



The nVent CADDY Wire Basket Tray PreForm Intersection is a precision-engineered solution designed to streamline cable tray installations at multi-pathway junctions. With its pre-galvanized steel base and interlocking polymer sidewalls, the PreForm Intersection delivers a clean, consistent, and tool-free installation experience.

Additionally, the PreForm Intersection significantly reduces installation time by eliminating the need for field cutting or job site configuration. This translates into improved productivity and increased efficiency, especially in retrofit scenarios where flexibility is critical.

CERTIFICATIONS



FEATURES

Multiple color options to coordinate with cable tray selection

Flame-retardant polymer rails ensure the safety of high-performance cabling

Routes cable systems in multiple directions

Provides a clean bend radius and helps to protect the natural bend radius of varying cable systems

SPECIFICATIONS

Finish: Pregalvanized; Polyurethane

Material: Steel

Table 1/2

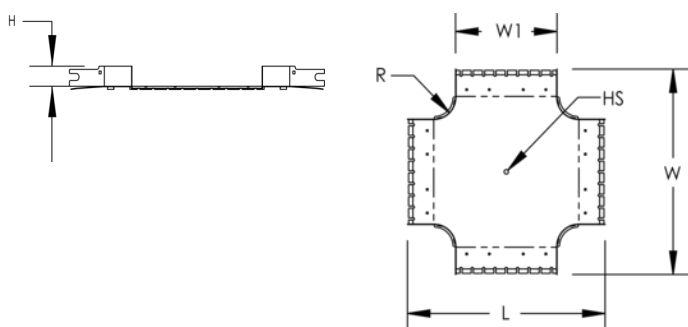
Catalog Number	Color	Height (H)	Width (W)	Length (L)	Hole Size (HS)	Radius (R)
WBTI2X4		50.8 mm	511.48 mm	511.48mm		94.64mm
WBTI2X4BA	Black	50.8 mm	511.48 mm	511.48mm		94.64mm
WBTI2X4WH	White	50.8 mm	511.48 mm	511.48mm		94.64mm
WBTI2X6BA	Black	50.8 mm	561.34 mm	561.34mm		94.64mm
WBTI2X6		50.8 mm	561.34 mm	561.34mm		94.64mm
WBTI2X20		50.8 mm	911.86 mm	911.86mm	19.05 mm	94.64mm
WBTI2X24WH	White	50.8 mm	1016 mm	1016mm	19.05 mm	94.64mm
WBTI2X12WH	White	50.8 mm	711.2 mm	711.2mm	19.05 mm	94.64mm
WBTI2X24BA	Black	50.8 mm	1016 mm	1016mm	19.05 mm	94.64mm
WBTI2X12BA	Black	50.8 mm	711.2 mm	711.2mm	19.05 mm	94.64mm
WBTI2X18BA	Black	50.8 mm	861.06 mm	861.06mm	19.05 mm	94.64mm
WBTI2X24		50.8 mm	1016 mm	1016mm	19.05 mm	94.64mm
WBTI2X20BA	Black	50.8 mm	911.86 mm	911.86mm	19.05 mm	94.64mm
WBTI2X18		50.8 mm	861.06 mm	861.06mm	19.05 mm	94.64mm
WBTI2X16BA	Black	50.8 mm	812.8 mm	812.8mm	19.05 mm	94.64mm
WBTI2X12		50.8 mm	711.2 mm	711.2mm	19.05 mm	94.64mm
WBTI2X8WH	White	50.8 mm	612.14 mm	612.14mm		94.64mm
WBTI2X8		50.8 mm	612.14 mm	612.14mm		94.64mm
WBTI2X8BA	Black	50.8 mm	612.14 mm	612.14mm		94.64mm

Table 2/2

Catalog Number	Unit Weight	Certifications
WBTI2X4	0.907 kg	cUL, UL
WBTI2X4BA	0.907 kg	
WBTI2X4WH	0.907 kg	
WBTI2X6BA	1.361 kg	
WBTI2X6	1.361 kg	cUL, UL
WBTI2X20	6.35 kg	cUL, UL
WBTI2X24WH	8.165 kg	
WBTI2X12WH	3.175 kg	
WBTI2X24BA	8.165 kg	
WBTI2X12BA	3.175 kg	
WBTI2X18BA	5.443 kg	
WBTI2X24	8.165 kg	cUL, UL

Catalog Number	Unit Weight	Certifications
WBTI2X20BA	6.35 kg	
WBTI2X18	5.443 kg	cUL, UL
WBTI2X16BA	4.536 kg	
WBTI2X12	3.175 kg	UL, cUL
WBTI2X8WH	2.268 kg	
WBTI2X8	2.268 kg	cUL, UL
WBTI2X8BA	2.268 kg	

DIAGRAMS



WARNING

nVent products shall be installed and used only as indicated in nVent's product instruction sheets and training materials. Instruction sheets are available at www.nvent.com and from your nVent customer service representative. Improper installation, misuse, misapplication or other failure to completely follow nVent's instructions and warnings may cause product malfunction, property damage, serious bodily injury and death and/or void your warranty.

North America

+1.800.753.9221
Option 1 – Customer Care
Option 2 – Technical
Support

Europe

Netherlands:
+31 800-0200135
France:
+33 800 901 793

Europe

Germany:
800 1890272
Other Countries:
+31 13 5835404

APAC

Shanghai:
+ 86 21 2412 1618/19
Sydney:
+61 2 9751 8500



Our powerful portfolio of brands:

CADDY ERICO HOFFMAN ILSCO SCHROFF TRACHTE

