



**CONNECT AND PROTECT**

# nVent ERICO Electrical Earth Bars

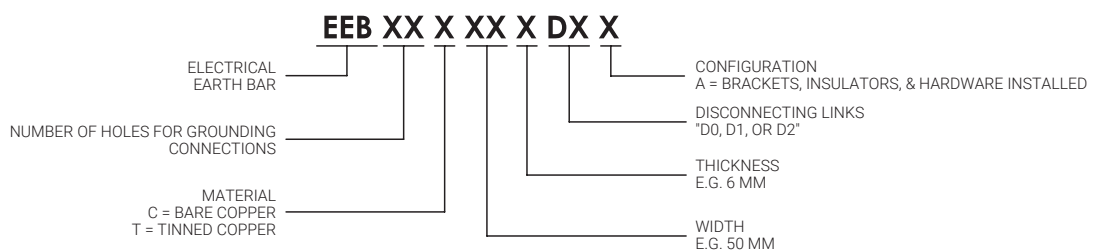
# Introduction



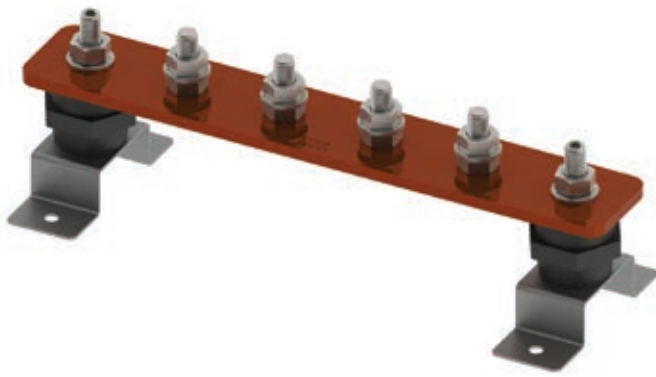
nVent ERICO Electrical Earth Bars (EEB) provide a common earthing point for multiple electrical panels and devices. Earth bars are a key component of the nVent ERICO foundation for protection plan and help to eliminate the risk of earth potential loops in large complexes and buildings. Disconnect links allow for quick and easy testing of the earth termination system. nVent uses high quality components to ensure easy assembly, reliable service and installation longevity. Custom designs are available upon request.

## STANDARD PART NUMBER LOGIC

CUSTOM DESIGNS ALSO AVAILABLE



# Electrical Earth Bar

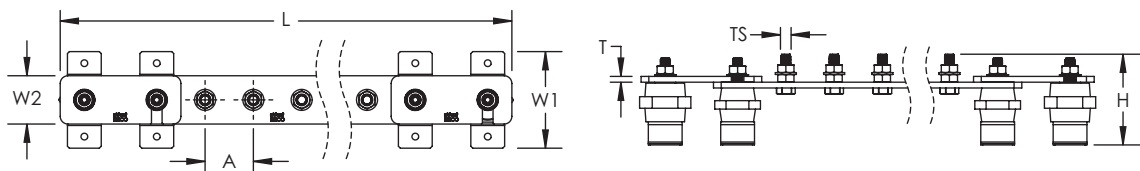


## FEATURES

- Provides a convenient, single-point grounding and bonding location
- Busbars with disconnect links allow for convenient testing of the earth termination system
- High conductivity, hard drawn, electrolytic tough pitch copper per EN 13601
- Includes halogen-free polyamide insulators, stainless steel (EN 1.4401) hardware and mounting brackets
- Custom bars can be designed and manufactured to customer specifications

| Part Number                      | Number of Connections | Thread Size (TS) | Height (H) | Length (L) | Width 1 (W1) | Width 2 (W2) | Thickness (T) | Hole Centers (A) | Unit Weight |
|----------------------------------|-----------------------|------------------|------------|------------|--------------|--------------|---------------|------------------|-------------|
| <b>Finish: Bare Copper Bar</b>   |                       |                  |            |            |              |              |               |                  |             |
| EEB04C506D0A                     | 4                     | M10              | 94 mm      | 300 mm     | 100 mm       | 50 mm        | 6 mm          | 50 mm            | 1.45 kg     |
| EEB06C506D0A                     | 6                     | M10              | 94 mm      | 400 mm     | 100 mm       | 50 mm        | 6 mm          | 50 mm            | 1.84 kg     |
| EEB08C506D0A                     | 8                     | M10              | 94 mm      | 500 mm     | 100 mm       | 50 mm        | 6 mm          | 50 mm            | 2.23 kg     |
| EEB10C506D0A                     | 10                    | M10              | 94 mm      | 600 mm     | 100 mm       | 50 mm        | 6 mm          | 50 mm            | 2.63 kg     |
| EEB12C506D0A                     | 12                    | M10              | 94 mm      | 700 mm     | 100 mm       | 50 mm        | 6 mm          | 50 mm            | 3.03 kg     |
| EEB14C506D0A                     | 14                    | M10              | 94 mm      | 850 mm     | 100 mm       | 50 mm        | 6 mm          | 50 mm            | 3.75 kg     |
| EEB16C506D0A                     | 16                    | M10              | 94 mm      | 950 mm     | 100 mm       | 50 mm        | 6 mm          | 50 mm            | 4.14 kg     |
| EEB18C506D0A                     | 18                    | M10              | 94 mm      | 1,050 mm   | 100 mm       | 50 mm        | 6 mm          | 50 mm            | 4.54 kg     |
| EEB20C506D0A                     | 20                    | M10              | 94 mm      | 1,150 mm   | 100 mm       | 50 mm        | 6 mm          | 50 mm            | 4.93 kg     |
| EEB22C506D0A                     | 22                    | M10              | 94 mm      | 1,250 mm   | 100 mm       | 50 mm        | 6 mm          | 50 mm            | 5.33 kg     |
| EEB24C506D0A                     | 24                    | M10              | 94 mm      | 1,350 mm   | 100 mm       | 50 mm        | 6 mm          | 50 mm            | 5.72 kg     |
| EEB26C506D0A                     | 26                    | M10              | 94 mm      | 1,500 mm   | 100 mm       | 50 mm        | 6 mm          | 50 mm            | 6.44 kg     |
| EEB28C506D0A                     | 28                    | M10              | 94 mm      | 1,600 mm   | 100 mm       | 50 mm        | 6 mm          | 50 mm            | 6.84 kg     |
| EEB30C506D0A                     | 30                    | M10              | 94 mm      | 1,700 mm   | 100 mm       | 50 mm        | 6 mm          | 50 mm            | 7.23 kg     |
| <b>Finish: Tinned Copper Bar</b> |                       |                  |            |            |              |              |               |                  |             |
| EEB04T506D0A                     | 4                     | M10              | 94 mm      | 300 mm     | 100 mm       | 50 mm        | 6 mm          | 50 mm            | 1.47 kg     |
| EEB06T506D0A                     | 6                     | M10              | 94 mm      | 400 mm     | 100 mm       | 50 mm        | 6 mm          | 50 mm            | 1.87 kg     |
| EEB08T506D0A                     | 8                     | M10              | 94 mm      | 500 mm     | 100 mm       | 50 mm        | 6 mm          | 50 mm            | 2.27 kg     |
| EEB10T506D0A                     | 10                    | M10              | 94 mm      | 600 mm     | 100 mm       | 50 mm        | 6 mm          | 50 mm            | 2.67 kg     |
| EEB12T506D0A                     | 12                    | M10              | 94 mm      | 700 mm     | 100 mm       | 50 mm        | 6 mm          | 50 mm            | 3.07 kg     |
| EEB14T506D0A                     | 14                    | M10              | 94 mm      | 850 mm     | 100 mm       | 50 mm        | 6 mm          | 50 mm            | 3.81 kg     |
| EEB16T506D0A                     | 16                    | M10              | 94 mm      | 950 mm     | 100 mm       | 50 mm        | 6 mm          | 50 mm            | 4.21 kg     |
| EEB18T506D0A                     | 18                    | M10              | 94 mm      | 1,050 mm   | 100 mm       | 50 mm        | 6 mm          | 50 mm            | 4.61 kg     |
| EEB20T506D0A                     | 20                    | M10              | 94 mm      | 1,150 mm   | 100 mm       | 50 mm        | 6 mm          | 50 mm            | 5.01 kg     |
| EEB22T506D0A                     | 22                    | M10              | 94 mm      | 1,250 mm   | 100 mm       | 50 mm        | 6 mm          | 50 mm            | 5.41 kg     |
| EEB24T506D0A                     | 24                    | M10              | 94 mm      | 1,350 mm   | 100 mm       | 50 mm        | 6 mm          | 50 mm            | 5.81 kg     |
| EEB26T506D0A                     | 26                    | M10              | 94 mm      | 1,500 mm   | 100 mm       | 50 mm        | 6 mm          | 50 mm            | 6.54 kg     |
| EEB28T506D0A                     | 28                    | M10              | 94 mm      | 1,600 mm   | 100 mm       | 50 mm        | 6 mm          | 50 mm            | 6.94 kg     |
| EEB30T506D0A                     | 30                    | M10              | 94 mm      | 1,700 mm   | 100 mm       | 50 mm        | 6 mm          | 50 mm            | 7.34 kg     |

Tinned finish is 8 microns according to ASTM B545 Service Class "C" for corrosive environments.



# Electrical Earth Bar – Single Disconnect Link

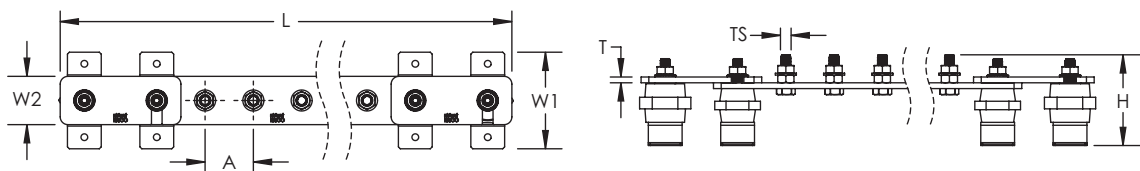


## FEATURES

- Provides a convenient, single-point grounding and bonding location
- Busbars with disconnect links allow for convenient testing of the earth termination system
- High conductivity, hard drawn, electrolytic tough pitch copper per EN 13601
- Includes halogen-free polyamide insulators, stainless steel (EN 1.4401) hardware and mounting brackets
- Custom bars can be designed and manufactured to customer specifications

| Part Number                      | Number of Connections | Thread Size (TS) | Height (H) | Length (L) | Width 1 (W1)     | Width 2 (W2) | Thickness (T) | Hole Centers (A) | Unit Weight |
|----------------------------------|-----------------------|------------------|------------|------------|------------------|--------------|---------------|------------------|-------------|
| <b>Finish: Bare Copper Bar</b>   |                       |                  |            |            |                  |              |               |                  |             |
| EEB04C506D1A                     | 4                     | M10              | 94 mm      | 375 mm     | 100 mm           | 50 mm        | 6 mm          | 50 mm            | 2.06 kg     |
| EEB06C506D1A                     | 6                     | M10              | 94 mm      | 475 mm     | 100 mm           | 50 mm        | 6 mm          | 50 mm            | 2.45 kg     |
| EEB08C506D1A                     | 8                     | M10              | 94 mm      | 575 mm     | 100 mm           | 50 mm        | 6 mm          | 50 mm            | 2.85 kg     |
| EEB10C506D1A                     | 10                    | M10              | 94 mm      | 675 mm     | 100 mm           | 50 mm        | 6 mm          | 50 mm            | 3.24 kg     |
| EEB12C506D1A                     | 12                    | M10              | 94 mm      | 775 mm     | 100 mm           | 50 mm        | 6 mm          | 50 mm            | 3.64 kg     |
| EEB14C506D1A                     | 14                    | M10              | 94 mm      | 925 mm     | 100 mm           | 50 mm        | 6 mm          | 50 mm            | 4.36 kg     |
| EEB16C506D1A                     | 16                    | M10              | 94 mm      | 1,025 mm   | 100 mm           | 50 mm        | 6 mm          | 50 mm            | 4.76 kg     |
| EEB18C506D1A                     | 18                    | M10              | 94 mm      | 1,125 mm   | 100 mm           | 50 mm        | 6 mm          | 50 mm            | 5.15 kg     |
| EEB20C506D1A                     | 20                    | M10              | 94 mm      | 1,225 mm   | 100 mm           | 50 mm        | 6 mm          | 50 mm            | 5.54 kg     |
| EEB22C506D1A                     | 22                    | M10              | 94 mm      | 1,325 mm   | 100 mm           | 50 mm        | 6 mm          | 50 mm            | 5.94 kg     |
| EEB24C506D1A                     | 24                    | M10              | 94 mm      | 1,425 mm   | 100 mm           | 50 mm        | 6 mm          | 50 mm            | 6.33 kg     |
| EEB26C506D1A                     | 26                    | M10              | 94 mm      | 1,575 mm   | 100 mm           | 50 mm        | 6 mm          | 50 mm            | 7.05 kg     |
| EEB28C506D1A                     | 28                    | M10              | 94 mm      | 1,675 mm   | 100 mm           | 50 mm        | 6 mm          | 50 mm            | 7.45 kg     |
| EEB30C506D1A                     | 30                    | M10              | 94 mm      | 1,775 mm   | 100 mm           | 50 mm        | 6 mm          | 50 mm            | 7.84 kg     |
| <b>Finish: Tinned Copper Bar</b> |                       |                  |            |            |                  |              |               |                  |             |
| EEB04T506D1A                     | 4                     | M10              | 94 mm      | 375 mm     | 100 mm           | 50 mm        | 6 mm          | 50 mm            | 2.08 kg     |
| EEB06T506D1A                     | 6                     | M10              | 94 mm      | 475 mm     | 100 mm           | 50 mm        | 6 mm          | 50 mm            | 2.48 kg     |
| EEB08T506D1A                     | 8                     | M10              | 94 mm      | 575 mm     | 100 mm           | 50 mm        | 6 mm          | 50 mm            | 2.89 kg     |
| EEB10T506D1A                     | 10                    | M10              | 94 mm      | 675 mm     | 100 mm           | 50 mm        | 6 mm          | 50 mm            | 3.29 kg     |
| EEB12T506D1A                     | 12                    | M10              | 94 mm      | 775 mm     | 100 mm           | 50 mm        | 6 mm          | 50 mm            | 3.67 kg     |
| EEB14T506D1A                     | 14                    | M10              | 94 mm      | 925 mm     | 100 mm           | 50 mm        | 6 mm          | 50 mm            | 4.42 kg     |
| EEB16T506D1A                     | 16                    | M10              | 94 mm      | 1,025 mm   | 100 mm           | 50 mm        | 6 mm          | 50 mm            | 4.82 kg     |
| EEB18T506D1A                     | 18                    | M10              | 94 mm      | 1,125 mm   | 100 mm <td 50 mm | 6 mm         | 50 mm         | 5.22 kg          |             |
| EEB20T506D1A                     | 20                    | M10              | 94 mm      | 1,225 mm   | 100 mm           | 50 mm        | 6 mm          | 50 mm            | 5.62 kg     |
| EEB22T506D1A                     | 22                    | M10              | 94 mm      | 1,325 mm   | 100 mm           | 50 mm        | 6 mm          | 50 mm            | 6.02 kg     |
| EEB24T506D1A                     | 24                    | M10              | 94 mm      | 1,425 mm   | 100 mm           | 50 mm        | 6 mm          | 50 mm            | 6.42 kg     |
| EEB26T506D1A                     | 26                    | M10              | 94 mm      | 1,575 mm   | 100 mm           | 50 mm        | 6 mm          | 50 mm            | 7.16 kg     |
| EEB28T506D1A                     | 28                    | M10              | 94 mm      | 1,675 mm   | 100 mm           | 50 mm        | 6 mm          | 50 mm            | 7.56 kg     |
| EEB30T506D1A                     | 30                    | M10              | 94 mm      | 1,775 mm   | 100 mm           | 50 mm        | 6 mm          | 50 mm            | 7.96 kg     |

Tinned finish is 8 microns according to ASTM B545 Service Class "C" for corrosive environments.



# Electrical Earth Bar – Double Disconnect Links

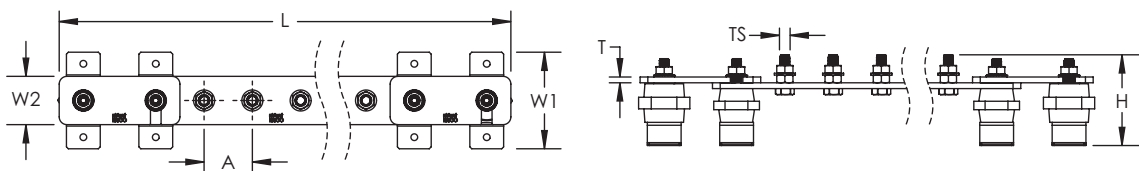


## FEATURES

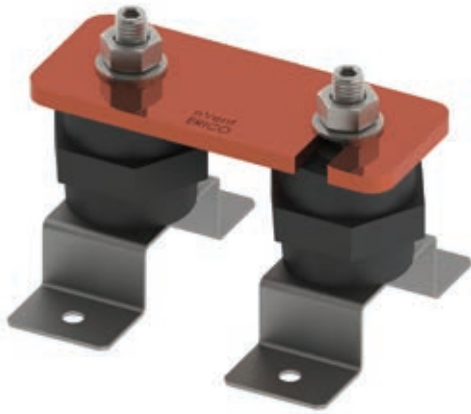
- Provides a convenient, single-point grounding and bonding location
- Busbars with disconnect links allow for convenient testing of the earth termination system
- High conductivity, hard drawn, electrolytic tough pitch copper per EN 13601
- Includes halogen-free polyamide insulators, stainless steel (EN 1.4401) hardware and mounting brackets
- Custom bars can be designed and manufactured to customer specifications

| Part Number                      | Number of Connections | Thread Size (TS) | Height (H) | Length (L) | Width 1 (W1)     | Width 2 (W2) | Thickness (T) | Hole Centers (A) | Unit Weight |
|----------------------------------|-----------------------|------------------|------------|------------|------------------|--------------|---------------|------------------|-------------|
| <b>Finish: Bare Copper Bar</b>   |                       |                  |            |            |                  |              |               |                  |             |
| EEB04C506D2A                     | 4                     | M10              | 94 mm      | 450 mm     | 100 mm           | 50 mm        | 6 mm          | 50 mm            | 2.67 kg     |
| EEB06C506D2A                     | 6                     | M10              | 94 mm      | 550 mm     | 100 mm           | 50 mm        | 6 mm          | 50 mm            | 3.07 kg     |
| EEB08C506D2A                     | 8                     | M10              | 94 mm      | 650 mm     | 100 mm           | 50 mm        | 6 mm          | 50 mm            | 3.46 kg     |
| EEB10C506D2A                     | 10                    | M10              | 94 mm      | 750 mm     | 100 mm           | 50 mm        | 6 mm          | 50 mm            | 3.86 kg     |
| EEB12C506D2A                     | 12                    | M10              | 94 mm      | 850 mm     | 100 mm           | 50 mm        | 6 mm          | 50 mm            | 4.25 kg     |
| EEB14C506D2A                     | 14                    | M10              | 94 mm      | 1,000 mm   | 100 mm           | 50 mm        | 6 mm          | 50 mm            | 4.97 kg     |
| EEB16C506D2A                     | 16                    | M10              | 94 mm      | 1,100 mm   | 100 mm           | 50 mm        | 6 mm          | 50 mm            | 5.37 kg     |
| EEB18C506D2A                     | 18                    | M10              | 94 mm      | 1,200 mm   | 100 mm           | 50 mm        | 6 mm          | 50 mm            | 5.76 kg     |
| EEB20C506D2A                     | 20                    | M10              | 94 mm      | 1,300 mm   | 100 mm           | 50 mm        | 6 mm          | 50 mm            | 6.15 kg     |
| EEB22C506D2A                     | 22                    | M10              | 94 mm      | 1,400 mm   | 100 mm           | 50 mm        | 6 mm          | 50 mm            | 6.55 kg     |
| EEB24C506D2A                     | 24                    | M10              | 94 mm      | 1,500 mm   | 100 mm           | 50 mm        | 6 mm          | 50 mm            | 6.94 kg     |
| EEB26C506D2A                     | 26                    | M10              | 94 mm      | 1,650 mm   | 100 mm           | 50 mm        | 6 mm          | 50 mm            | 7.66 kg     |
| EEB28C506D2A                     | 28                    | M10              | 94 mm      | 1,750 mm   | 100 mm           | 50 mm        | 6 mm          | 50 mm            | 8.06 kg     |
| EEB30C506D2A                     | 30                    | M10              | 94 mm      | 1,850 mm   | 100 mm           | 50 mm        | 6 mm          | 50 mm            | 8.45 kg     |
| <b>Finish: Tinned Copper Bar</b> |                       |                  |            |            |                  |              |               |                  |             |
| EEB04T506D2A                     | 4                     | M10              | 94 mm      | 450 mm     | 100 mm           | 50 mm        | 6 mm          | 50 mm            | 2.70 kg     |
| EEB06T506D2A                     | 6                     | M10              | 94 mm      | 550 mm     | 100 mm           | 50 mm        | 6 mm          | 50 mm            | 3.10 kg     |
| EEB08T506D2A                     | 8                     | M10              | 94 mm      | 650 mm     | 100 mm           | 50 mm        | 6 mm          | 50 mm            | 3.50 kg     |
| EEB10T506D2A                     | 10                    | M10              | 94 mm      | 750 mm     | 100 mm           | 50 mm        | 6 mm          | 50 mm            | 3.90 kg     |
| EEB12T506D2A                     | 12                    | M10              | 94 mm      | 850 mm     | 100 mm           | 50 mm        | 6 mm          | 50 mm            | 4.30 kg     |
| EEB14T506D2A                     | 14                    | M10              | 94 mm      | 1,000 mm   | 100 mm           | 50 mm        | 6 mm          | 50 mm            | 5.03 kg     |
| EEB16T506D2A                     | 16                    | M10              | 94 mm      | 1,100 mm   | 100 mm           | 50 mm        | 6 mm          | 50 mm            | 5.43 kg     |
| EEB18T506D2A                     | 18                    | M10              | 94 mm      | 1,200 mm   | 100 mm           | 50 mm        | 6 mm          | 50 mm            | 5.83 kg     |
| EEB20T506D2A                     | 20                    | M10              | 94 mm      | 1,300 mm   | 100 mm           | 50 mm        | 6 mm          | 50 mm            | 6.23 kg     |
| EEB22T506D2A                     | 22                    | M10              | 94 mm      | 1,400 mm   | 100 mm           | 50 mm        | 6 mm          | 50 mm            | 6.64 kg     |
| EEB24T506D2A                     | 24                    | M10              | 94 mm      | 1,500 mm   | 100 mm <td 50 mm | 6 mm         | 50 mm         | 7.04 kg          |             |
| EEB26T506D2A                     | 26                    | M10              | 94 mm      | 1,650 mm   | 100 mm           | 50 mm        | 6 mm          | 50 mm            | 7.77 kg     |
| EEB28T506D2A                     | 28                    | M10              | 94 mm      | 1,750 mm   | 100 mm           | 50 mm        | 6 mm          | 50 mm            | 8.17 kg     |
| EEB30T506D2A                     | 30                    | M10              | 94 mm      | 1,850 mm   | 100 mm           | 50 mm        | 6 mm          | 50 mm            | 8.57 kg     |

Tinned finish is 8 microns according to ASTM B545 Service Class "C" for corrosive environments.



# Disconnecting Link

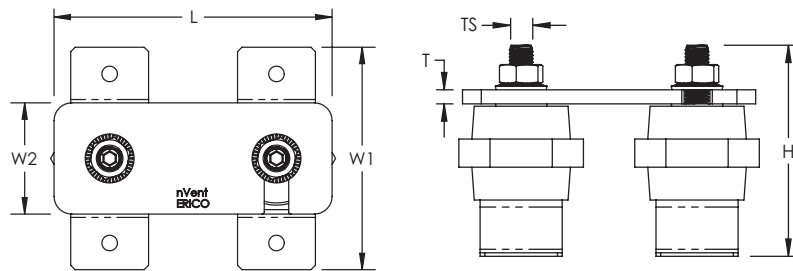


## FEATURES

- Allows for quick and easy disconnection of the earthing system to facilitate testing of the earth in isolation
- High conductivity, hard drawn, electrolytic tough pitch copper per EN 13601
- Includes halogen-free polyamide insulators, stainless steel (EN 1.4401) hardware and mounting brackets

| Part Number                      | Thread Size (TS) | Height (H) | Length (L) | Width 1 (W1) | Width 2 (W2) | Thickness (T) | Unit Weight |
|----------------------------------|------------------|------------|------------|--------------|--------------|---------------|-------------|
| <b>Finish: Bare Copper Bar</b>   |                  |            |            |              |              |               |             |
| DLINKC                           | M10              | 90 mm      | 125 mm     | 100 mm       | 50 mm        | 6 mm          | 0.77 kg     |
| <b>Finish: Tinned Copper Bar</b> |                  |            |            |              |              |               |             |
| DLINKT                           | M10              | 90 mm      | 125 mm     | 100 mm       | 50 mm        | 6 mm          | 0.77 kg     |

Tinned finish is 8 microns according to ASTM B545 Service Class "C" for corrosive environments.



# Swan-Neck Link

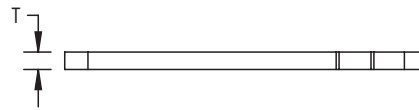
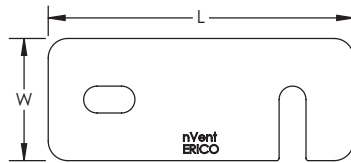


## FEATURES

- Standalone link that joins two or more nVent ERICO electrical earth bars
- High conductivity, hard drawn, electrolytic tough pitch copper per EN 13601

| Part Number                      | Length (L) | Width (W) | Thickness (T) | Unit Weight |
|----------------------------------|------------|-----------|---------------|-------------|
| <b>Finish: Bare Copper Bar</b>   |            |           |               |             |
| EEBDLC                           | 125 mm     | 50 mm     | 6 mm          | 0.30 kg     |
| <b>Finish: Tinned Copper Bar</b> |            |           |               |             |
| EEBDLT                           | 125 mm     | 50 mm     | 6 mm          | 0.30 kg     |

Tinned finish is 8 microns according to ASTM B545 Service Class "C" for corrosive environments.



Our powerful portfolio of brands:

**CADDY ERICO HOFFMAN RAYCHEM SCHROFF TRACER**



[nVent.com/ERICO](https://www.nvent.com/ERICO)