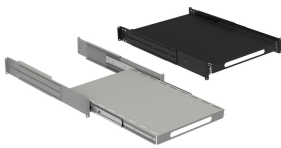


# Rack-Mount Sliding Shelf

## Data Solutions



The Rack-Mount Sliding Shelf allows easy access to shelf-mounted devices. The shelf is 16-gauge steel with 12-gauge steel supports. The shelf mounts to the front surface of front and back rack angles. When mounted directly to a frame, load rating is 150 lb. (68 kg) with four rack angle mountings and 75 lb. (34 kg) with front rack angle mounting. Rack accessories that are shorter than the enclosure depth can be mounted to rack angles or frame accessory brackets attached to grid straps. Order these items separately.

### FEATURES

Shelf is 16-gauge steel with 12-gauge steel supports

Mounts to the front surface of front and back rack angles

Load rating is 150 lb. (68 kg) with four rack angles mounted directly to frame verticals; load rating reduced to 75 lb. (34 kg) with front rack angle mounting only

Rack accessories that are shorter than the enclosure depth can be mounted to rack angles or frame accessory brackets attached to grid straps. Order these items separately

### SPECIFICATIONS

- Thickness:** 1.52mm
- Color:** Jet Black
- Finish:** Powder Coated
- Color Code:** RAL 9005

Table 1/1

| Catalog Number | Article Number | Material   | Max Depth | Shelf Pullout | Rack Units | Fits Frame Depth |
|----------------|----------------|------------|-----------|---------------|------------|------------------|
| P23SHP810B     | 10016          | Mild Steel | 1050mm    | 432mm         | 2U         | 800 – 1000mm     |
| P19SHP810B     | 10014          | Mild Steel | 1050mm    | 432mm         | 2U         | 800 – 1000mm     |
| P19SHP68B      | 10013          | Mild Steel | 950mm     | 432mm         | 2U         | 600 – 800mm      |
| P23SHP68B      | 10015          | Mild Steel | 950mm     | 432mm         | 2U         | 600 – 800mm      |

## ADDITIONAL PRODUCT DETAILS

---

Note: only mount shelves in applications with four points of attachment.

## WARNING

---

nVent products shall be installed and used only as indicated in nVent's product instruction sheets and training materials. Instruction sheets are available at [www.nvent.com](http://www.nvent.com) and from your nVent customer service representative. Improper installation, misuse, misapplication or other failure to completely follow nVent's instructions and warnings may cause product malfunction, property damage, serious bodily injury and death and/or void your warranty.



Our powerful portfolio of brands:

**CADDY   ERICO   HOFFMAN   ILSCO   SCHROFF   TRACHTE**