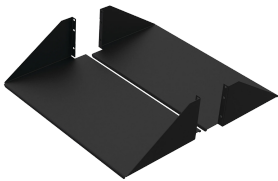


Double-Sided Solid-Steel Shelf

Data Solutions



The Double-Sided Solid Steel Shelf mounts to both the front and rear flanges of an open-frame rack. It consists of two shelves mounted on each side of the open-frame rack to form a double-sided shelf. It is a heavier duty solution as compared to the aluminum version. The load rating is 300 lb. (136.1 kg) total.

FEATURES

The Double-Sided Solid Steel Shelf mounts to both the front and rear flanges of an open-frame rack

It consists of two shelves mounted on each side of the open-frame rack to form a double-sided shelf

It is a heavier duty solution as compared to the aluminum version

The load rating is 300 lb. (136.1 kg) total

SPECIFICATIONS

Table 1/2						
Catalog Number	Article Number	Material	Finish	Color	Color Code	Thickness
ESH19	21869	Mild Steel	Powder Coated	Jet Black	RAL 9005	1.52mm
ESH23	21879	Mild Steel	Powder Coated	Jet Black	RAL 9005	1.52mm

Table 2/2					
Catalog Number	Article Number	Rack Units	Height	Width	Depth
ESH19	21869	3U	123mm	482mm	267mm
ESH23	21879	3U	123mm	584mm	267mm

WARNING

nVent products shall be installed and used only as indicated in nVent's product instruction sheets and training materials. Instruction sheets are available at www.nvent.com and from your nVent customer service representative. Improper

installation, misuse, misapplication or other failure to completely follow nVent's instructions and warnings may cause product malfunction, property damage, serious bodily injury and death and/or void your warranty.



Our powerful portfolio of brands:

CADDY ERICO HOFFMAN ILSCO SCHROFF TRACHTE