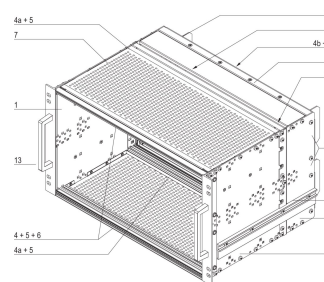
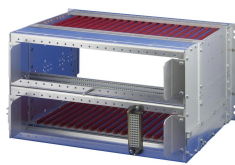
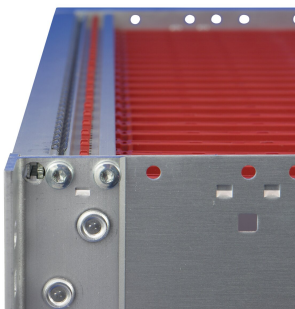
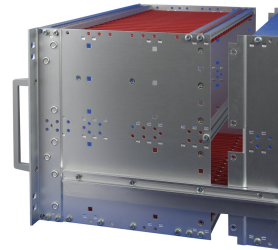
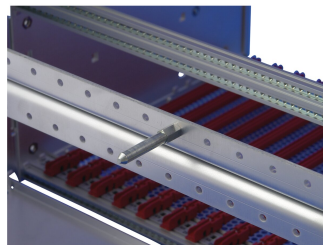
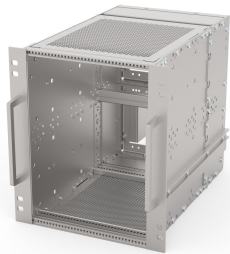


# EuropacPRO 19" Subrack Kit for Railway, Shielded, SNCF, 6 U, 36 HP, 320 mm

## KATALOGNUMMER

**21500-071**



Subrack for Railway applications, conform to SNCF Standard.

## CERTIFICERINGER



## FUNKTIONER

SNCF listed, EuropacPRO-fer, tested to NF F 61-005 and NF F 60-002

The 19" bracket is firmly fixed to the side panel (tox-cold welded) and is especially suited for high mechanical stresses (vibration resistance)

Lateral support bars to NFF standard facilitate insertion of subrack into the (cabinet) frame. The double 19" screwing position adds to additionally safety (NFF standard)

IP 20, in accordance with IEC 60529

EMC of approximately 40 dB at 1 GHz, 30 dB at 2 GHz, assuming that the front is covered with shielded front panels, testing in accordance with VG 95373 part 15

Aluminum construction

Modifications such as cutouts, different finishes or dimensions available

Supplied as space-saving flat-pack

## PRODUKTEGENSKABER

---

Rack Height: 6U

Rack Width: 36HP

Pakke mængde: 1

For Mounting: Backplane

Board Depth: 220mm

Gasket Type: Textile EMC

Shock and Vibration Tolerance: 5g (force)

Håndtag inkluderet: Yes

Mounting: Rack

Complies With: IEC 60297-3-103; SNCF NFF 61005; SNCF NFF 60002

Dybde: 320mm

EMC Shielding: Yes

Finish: Anodized; Passivated

Materiale: Aluminium

Product Type: Subrack/Chassis

Static Load: 15kg

Net Weight: 2.875kg

## YDERLIGERE PRODUKTOPLYSNINGER

---

Fer = ferroviaire = French Railways, 1 T = 4 HP = 20.32 mm.

Receptacle/mounting frame for subracks, stainless steel, 9 T or 21 T on request.

Individual configuration: broad range of variants in height, width and depth; guide rails for a wide variety of applications; interior options; accessories and mounting material.

## ADVARSEL

---

nVent-produkter skal kun installeres og anvendes som angivet i nVents produktvejledninger og træningsmaterialer. Vejledninger er tilgængelige på [www.nvent.com](http://www.nvent.com) og hos din nVent kundeservicerepræsentant. Forkert installation, misbrug, fejlanvendelse eller anden undladelse af fuldt ud at følge nVents instruktioner og advarsler kan medføre funktionsfejl, materielle skader, alvorlige personskader eller død og/eller ugyldiggøre din garanti.

### North America

All locations

+1.763.422.2661

Chat with us:

[nvent.com/schroff](https://nvent.com/schroff)

### Europe

Straubenhardt, Germany

+49.7082.794.0

Betschdorf, France

+33.3.88.90.64.90

Warsaw, Poland

+48.22.209.98.35

Assago, Italy

+39.02.932.7141

Chat with us:

[nvent.com/schroff](https://nvent.com/schroff)

### Asia

Shanghai, China

+86.21.2412.6943

Qingdao, China

+86.532.8771.6101

Singapore

+65.6768.5800

Shin-Yokohama, Japan

+81.45.476.0271

Chat with us:

[nvent.com/schroff](https://nvent.com/schroff)

### Middle East & India

Dubai, United Arab Emirates

+971.4.378.1700

Bangalore, India

+91.80.6715.2001

Istanbul, Turkey

+90.216.250.7374

Chat with us:

[nvent.com/schroff](https://nvent.com/schroff)



Vores kraftfulde portefølje af mærker:

**CADDY**

**ERICO**

**HOFFMAN**

**ILSCO**

**SCHROFF**

**TRACHTE**