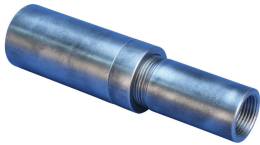


P24 Position Coupler, 57 mm, #18, 55M

KATALOGNUMMER

EL57TP24L



The P24 family of position couplers is designed for use on ASTM A615 grade 100 (700 MPa) reinforcing steel. The performance of the spliced connection is designed to meet the bars' specified ultimate tensile strength of 115 ksi (792 MPa).

FUNKTIONER

Designed to splice the same diameter bars

Designed to splice two curved, bent or straight bars, when neither bar can be rotated and where the ongoing bar is free to move in its axial direction

PRODUKTEGENSKABER

Materiale: Stål

Finish: Plain

100% U.S. Domestic Content: Yes

Rebar Size, Metric: 57 mm

Rebar Size, US: #18

Rebar Size, Canada: 55M

Diameter (Ø): 102 mm

Length 1 (L1): 347 mm

Length 2 (L2): 375 mm

Bar Depth (BD): 83mm

Bar Gap 1 (BG1): 180mm

Bar Gap 2 (BG2): 208mm

Coupler Body (CB): 188mm

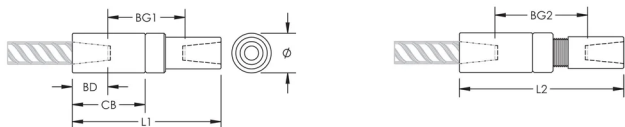
Unit Weight: 15.5 kg

Pakke mængde: 1

YDERLIGERE PRODUKTOPLYSNINGER

Bar dimensions and weights listed may vary by region. Coupler sizes not shown may be available by special order. Contact your nVent LENTON representative for more information.

DIAGRAMS



ADVARSEL

nVent-produkter skal kun installeres og anvendes som angivet i nVents produktvejledninger og træningsmaterialer. Vejledninger er tilgængelige på www.nvent.com og hos din nVent kundeservicerepræsentant. Forkert installation, misbrug, fejlanvendelse eller anden undladelse af fuldt ud at følge nVents instruktioner og advarsler kan medføre funktionsfejl, materielle skader, alvorlige personskader eller død og/eller ugyldiggøre din garanti.

North America

+1.800.753.9221
Option 1 – Customer Care
Option 2 – Technical
Support

Europe

Netherlands:
+31 800-0200135
France:
+33 800 901 793

Europe

Germany:
800 1890272
Other Countries:
+31 13 5835404

APAC

Shanghai:
+ 86 21 2412 1618/19
Sydney:
+61 2 9751 8500



Vores kraftfulde portefølje af mærker:

CADDY ERICO HOFFMAN ILSCO SCHROFF TRACHTE