

C13 Weldable Half Coupler, 16 mm, #5, 15M

KATALOGNUMMER

EL16C13N



CERTIFICERINGER



FUNKTIONER

Designed for connecting reinforcing bar perpendicular to structural steel sections or plates

Internally taper threaded on one end, with the other end prepared for welding

Machined from weldable grades of steel

Slim design maintains concrete cover

PRODUKTEGENSKABER

Materiale: Stål

Finish: Plain

Rebar Size, Metric: 16 mm

Rebar Size, US: #5

Rebar Size, Canada: 15M

Diameter 1 (Ø1): 25 mm

Diameter 2 (Ø2): 18 mm

Length (L): 45mm

Bar Depth (BD): 24mm

Unit Weight: 0.11 kg

Designed to Meet: AASHTO;ABNT NBR 8548:1984;ACI 318 Type 1 (125% Specified Yield);ACI 318 Type 2 (Specified Tensile);ACI 349;ACI 359;AS3600

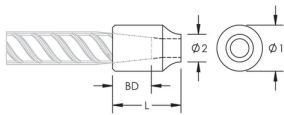
Pakke mængde: 150

YDERLIGERE PRODUKTOPLYSNINGER

Bar dimensions and weights listed may vary by region. Coupler sizes not shown may be available by special order. Contact your nVent LENTON representative for more information.

The design of the weld, the selection of electrode, and other relevant choices depend on the chemical and physical properties of the structural steel to which the couplers are welded. Engineers who design assemblies should adhere to all appropriate regulations.

DIAGRAMS



ADVARSEL

nVent-produkter skal kun installeres og anvendes som angivet i nVents produktvejledninger og træningsmaterialer. Vejledninger er tilgængelige på www.nvent.com og hos din nVent kundeservicerepræsentant. Forkert installation, misbrug, fejlanvendelse eller anden unndladelse af fuldt ud at følge nVents instruktioner og advarsler kan medføre funktionsfejl, materielle skader, alvorlige personskader eller død og/eller ugyldiggøre din garanti.

North America

+1.800.753.9221

Option 1 – Customer Care

Option 2 – Technical

Support

Europe

Netherlands:

+31 800-0200135

France:

+33 800 901 793

Europe

Germany:

800 1890272

Other Countries:

+31 13 5835404

APAC

Shanghai:

+ 86 21 2412 1618/19

Sydney:

+61 2 9751 8500



Vores kraftfulde portefølje af mærker:

CADDY

ERICO

HOFFMAN

ILSCO

SCHROFF

TRACHTE