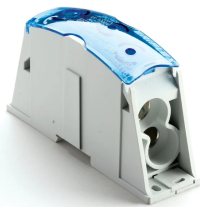


# Power Block, Flexibar-2 Cables, 400 A IEC, Aluminum

## Data Solutions

### KATALOGOVÉ ČÍSLO

### SBF2C400AL



nVent ERIFLEX Power Blocks are the main DIN mounted output/input devices for connection between primary and secondary switchboard, or main input/output connection for machine or industrial equipment (such as inverter, air conditioning machines, etc.). The high short circuit rated large cross section blocks offer time savings and reliability in every panel configuration. The complete Power Blocks range offers multiple connection types with up to four cables, nVent ERIFLEX Flexibar Advanced, or IBSB Advanced power braids.

### CERTIFICATIONS



### VLASTNOSTI

Can be connected with round cross section cable or flat connection system like nVent ERIFLEX Flexibar Advanced or IBSB Advanced Insulated Braided Conductor

Compact power block with high short circuit current rating

Tinned copper or aluminum block allows for copper or aluminum conductor direct connections, or using ferrule

Screw retaining cover is hinged and removable

Design allows for visual inspection of conductor and confirmation of connection

Modular snap-together blocks for building multi-pole power blocks

Easily clips onto DIN rail or mounts to panel with screws

Voltage detection and measurement connection

95% fill ratio

RoHS compliant

Conforms to EN 45545 obtaining an HL3 classification for chapter R23 and HL2 classification for chapter R22

Halogen free plastic housing excluding the blue protection cover

## VLASTNOSTI PRODUKTU

---

Article Number: 561167

Povrchová úprava: Tinned

Typ: Flexibar-2 Cables

Typical Application Current Rating, IEC: 400A

Materiál: Hliník; Thermoplastic

Line Side Max Conductor Size, IEC: 100 mm<sup>2</sup>

Load Side Max Conductor Size, IEC: (2) 120 mm<sup>2</sup>

Short Term Withstand Current (I<sub>cw</sub>) 1s: 28.8kA

Max Current Rating, Insulated Power Braid, IEC: 480A

Max Current Rating, nVent ERIFLEX Flexibar, IEC: 550A

Max Current Rating, UL/CSA: 335A

Peak Short Circuit Current (I<sub>pk</sub>): 51kA

Rated Conditional Short-Circuit Current (I<sub>cc</sub>): 24.3kA

Short Circuit Current Rating (SCCR): 100kA

Max Working Voltage, IEC (U<sub>i</sub>): 1000; 1500

Max Working Voltage, UL (V<sub>in</sub>): 1000

Line Side Number of Connections: 1

Line Side Insulated Power Braid Cross Section: 100mm<sup>2</sup>

Line Side nVent ERIFLEX Flexibar Size: 2x20x1 - 5x24x1

Load Side Compact Stranded Wire Size: (2) 35 - 120 mm<sup>2</sup>

Load Side Number of Connections: 2

Load Side Stranded Wire Size - Ferrule: (2) 35 - 120 mm<sup>2</sup>

Load Side Wire Size: (2) #2 – 250 kcmil

Hĺoubka (D): 82.2mm

Height (H): 146.4mm

Width (W): 41.5mm

Unit Weight: 0.34kg

Certification Details: UL® 1059

Complies With: IEC® 60947-7-1

Enclosure Rating: IP 20

Flammability Rating: UL® 94V-0

## DALŠÍ PODROBNOSTI O PRODUKTU

SBF250 is UL® 1953 Listed when used with SB250SPCR. Max Working Voltage for UL 1953 applications is 1250 VAC/DC.

Blue protection cover is less than 7% of the overall product weight.

| Design Guideline for Distribution Blocks, Power Blocks and Power Terminals              |     |     |     |      |      |      |      |      |      |      |
|---|-----|-----|-----|------|------|------|------|------|------|------|
| Derating according to Ambient* Temperature (°C) to maintain working temperature of 85°C |     |     |     |      |      |      |      |      |      |      |
| Ambient Temperature (°C)  | 30° | 35° | 40° | 45°  | 50°  | 55°  | 60°  | 65°  | 70°  | 75°  |
| Derating Coefficient (d)  | 1   | 1   | 1   | 0.94 | 0.88 | 0.82 | 0.75 | 0.67 | 0.58 | 0.47 |
| *environment around the terminal blocks inside the enclosure                            |     |     |     |      |      |      |      |      |      |      |

## DIAGRAMS



## UPOZORNĚNÍ

Produkty nVent musí být instalovány a používány pouze tak, jak je uvedeno v instrukčních listech a materiálech pro školení nVent. Instrukční listy jsou k dispozici na [www.nvent.com](http://www.nvent.com) a od vašeho zástupce zákaznického servisu nVent. Nesprávná instalace, zneužití, nesprávné použití nebo jiný nedostatek úplného dodržování pokynů a varování nVent může způsobit selhání produktu, poškození majetku, vážné zranění osob a smrt a/nebo zrušit vaši záruku.



Naše portfolio silných značek:

**CADDY ERICO HOFFMAN ILSCO SCHROFF TRACHTE**